

# Mi·Light<sup>®</sup>

## 1-Channel Amplifier Box

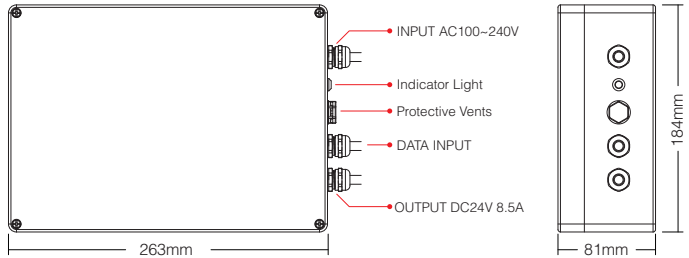
Model No.: SYS-PT2

### 1. Features

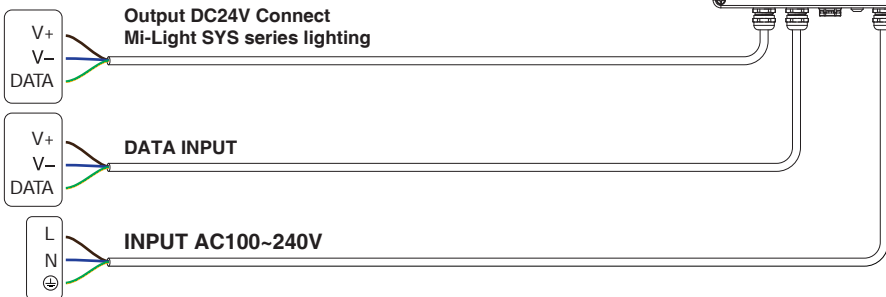
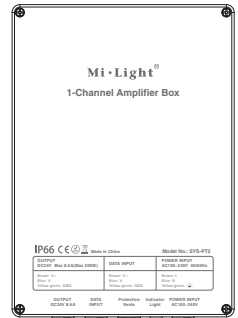
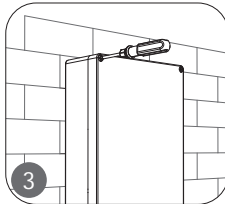
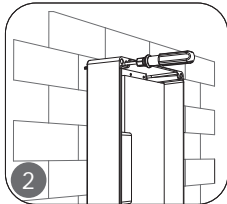
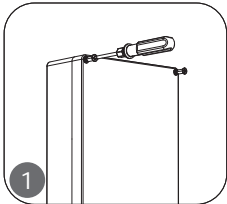
The amplifier is to amplify the power and signal for "SYS-PT1 1-channel host control box". It can amplify the signal from "SYS-PT1 control box" to connect more LED lamps, and synchronously control more lamps. When you add one more amplifier, you can connect double LED lamps.

### 2. Parameters

Model No.: SYS-PT2  
 Input: AC 100~240V 50/60Hz  
 Output Voltage: DC24V  
 Output Current: Max 8.5A  
 Output Power: Max 200W  
 IP Rate: IP66  
 Product Weight: 3.02kg



### 3. Installation Instruction

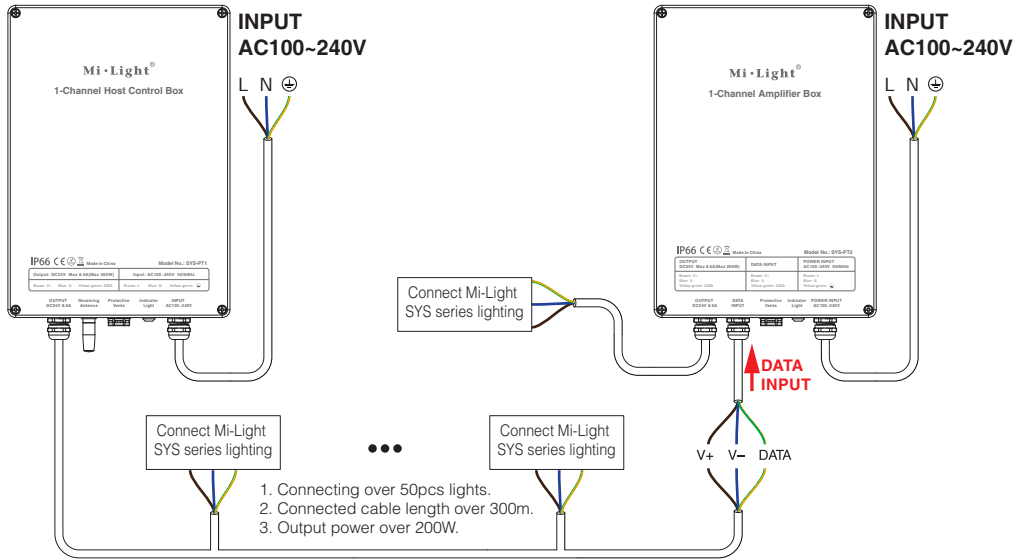


**Note:** When using "SYS-PT1 control box", you need again to add "SYS-PT2 1-channel amplifier box" for below 3 situations.

1. Connecting over 50pcs lights.
2. Connected cable length over 300m.
3. Output power over 200W.

## 4. Wiring Diagram

**SYS-PT1 1-Channel Host Control Box** (Need to buy separately)



### Note:

1. All connected lights to "SYS-PT1 control box" cannot be over 200W, otherwise, it will damage the control box.
2. The wiring method, please see details for the SYS series instructions.

## 5. Attention

1. Please check whether the input voltage is in accordance with the control box working voltage, and please check the connection of both the cathode and anode.
2. Non-professional user cannot dismantle the control box directly, Otherwise the control box may be broken.