



GLEDOPTO
WLED Remote control
User Instruction

GL-RC-002WL

Product Display



Product Parameter

Model No.: GL-RC-002WL

Input Voltage: 3V

Standby Current: <13uA

Battery Type: 1.5V(2*AAA Battery)

Control Distance: 50m

Protocol: WiFi

Material: PC

Protection Rate: IP20

Working Temperature: -20~45°C

Size: 39x16x143mm

Button Functions

- 1) ON: Turn on.
- 2) OFF: Turn off.
- 3) S1~S7: Short press to preset (preset needs manual setting, refer to "5. Preset Scenes" for setting steps).
- 4) Night: Short press to enter night light mode, brightness decreases to the lowest.
- 5) Brightness +: Short press to increase brightness.
- 6) Brightness -: Short press to decrease brightness.

Note:

1. To reduce the power consumption of the remote control, it will enter sleep mode after 2 seconds and can be woken up by long pressing or double-clicking any button.
2. The S5/S6/S7 buttons can only be used with controllers that have been customized-programmed by GLEDOPTO (e.g., models like GL-C-615WL, GL-C-616WL, etc.).

WLED Remote Control Connection Steps

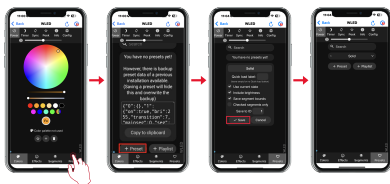
1. Please ensure that the WLED controller version is 0.14.0-beta3 or above.
2. Please ensure that WLED Remote is in a good WiFi environment.
3. Go to the WLED controller's control page, click "Config" in the top right corner, select "WiFi Setup", scroll down to the bottom to find "ESP-NOW Wireless", check "Enable ESP-NOW", then click "Save & Connect".
4. Long press any button on the WLED remote for 1 second, then go to "WiFi Setup", find "ESP-NOW Wireless", copy the field after "Last device Seen" to "Paired Remote MAC", then click "Save & Connect" to use the WLED remote control to control the WLED controller.



Preset Scenes

Go to the WLED control page, click "Presets" at the bottom, select "Preset", then click "Save".

Note: The saved Preset reflects the current status of the controller. Save to ID 1 is Scene 1, Save to ID 2 is Scene 2, and so on.





1. Before turning on the power, please ensure that all connections are correct and secure, and do not operate while the power is on.
2. The product should be used under the rated voltage. Using it under excessive or insufficient voltage may cause damage.
3. Do not disassemble the product, as it may cause fire and electric shock.
4. Do not use the product in environments exposed to direct sunlight, moisture, high temperatures, etc.
5. Do not use the product in metal shielded areas or around strong magnetic fields, as this may severely affect the wireless signal transmission of the product.

Disclaimers

1. Our company will update the content of this manual based on the improvement of product functionality. The updates will be displayed in the latest version of this manual, without further notice.
2. Due to our continuous adoption of new technologies, product specifications may change without further notice.
3. This manual is provided for reference and guidance only and does not guarantee complete consistency with the actual product. The actual application should be based on the actual product.
4. The components and accessories described in this manual do not represent the standard configuration of the product. The specific configuration is subject to the packaging.
5. All text, tables, and images in this manual are protected by relevant national laws and may not be used without our permission.
6. This product may be compatible with third-party products (such as apps, hubs, etc.), but our company does not take responsibility for compatibility issues or partial loss of functionality caused by changes in third-party products.